



Assembly instructions for TH381

Specifications of Torque Forces

MADE IN ITALY

High-reliability
electrical connections
www.techno.it

16 March 2017

© Techno s.r.l. All rights reserved.



TH381 screw terminals tightening



Screw tightening

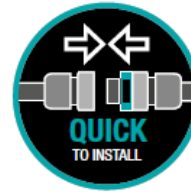
THB.381.xxx.x
max. **0.2 Nm**

Cable cross-section


0.25 mm² – 1.5 mm²

Stranded and solid
conductors

TH381 cable-to-cable



To connect

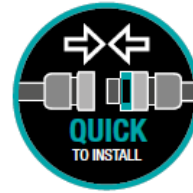
1. Push the plug connector into the socket connector until fully seated
2. A noise is the proof of correct matching 
3. Apply gentle traction between plug and socket to ensure they are well hooked

Note

- PATENTED HOOKING SYSTEM: maximum pull-out force is 25 Kg

TH381 cable-to-cable

To disconnect



To disconnect

1. Press the button and pull the plug out from the socket

TH381 cable-to-cable



Code: THx.381.xxx.x

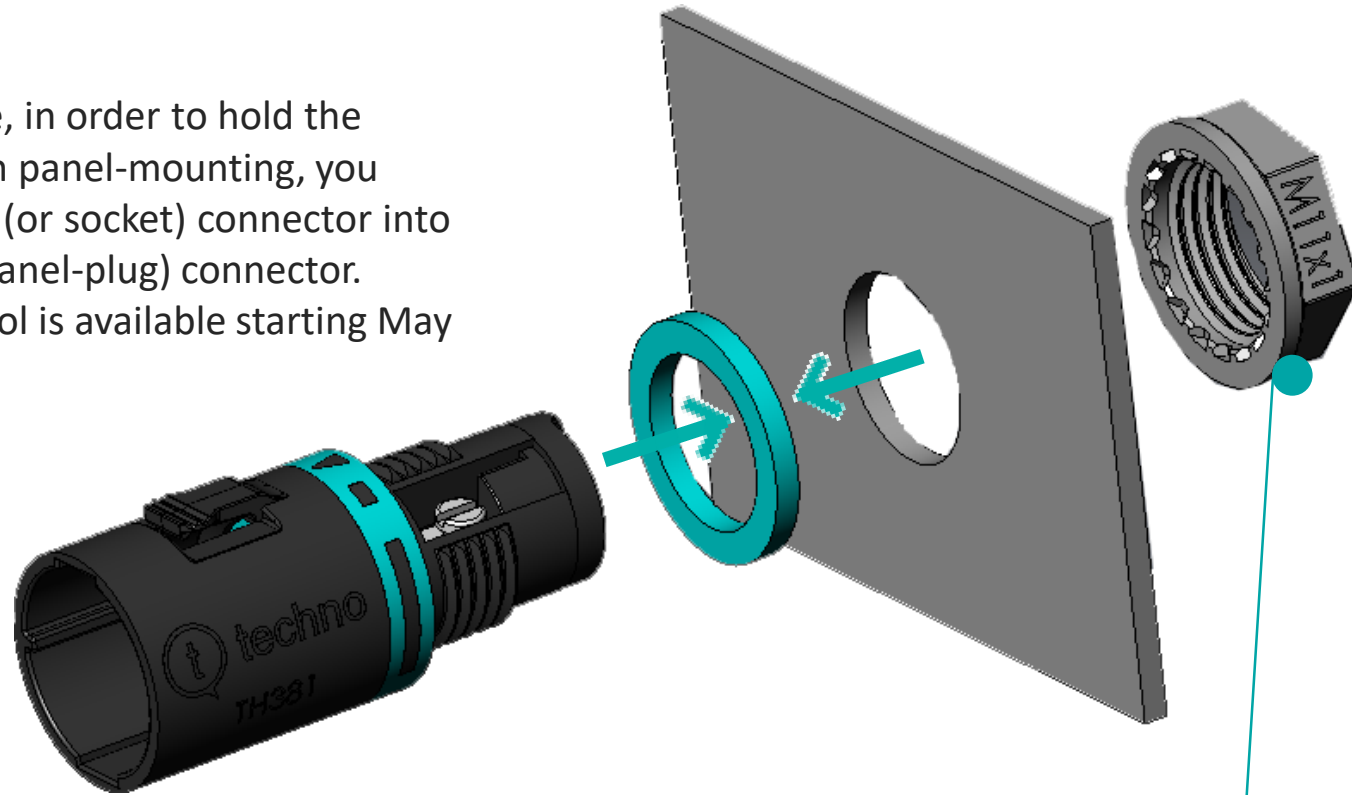


Code: THx.381.xxx.x

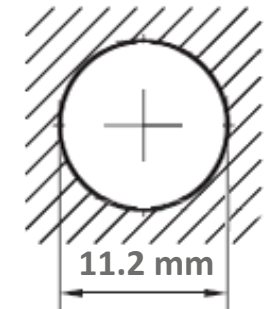
TH381 panel-mounted M11x1

Important

In case of circular hole, in order to hold the panel-connector when panel-mounting, you should insert the plug (or socket) connector into the panel-socket (or panel-plug) connector. A specific assembly tool is available starting May '17



Code: THx.381.Mxx
THx.381.Lxx

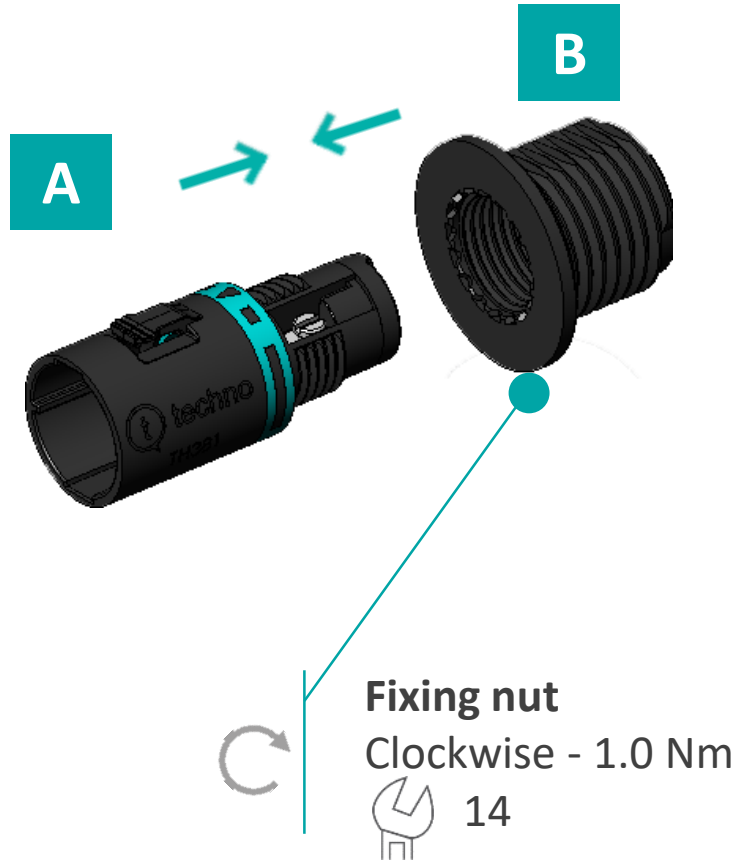


Panel thickness:
1.0 mm ÷ 4.0 mm

Fixing nut
Clockwise - 1.5 Nm
 13

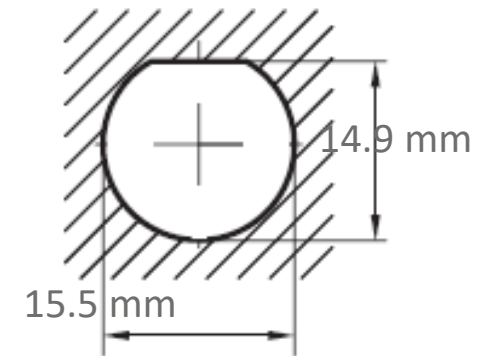
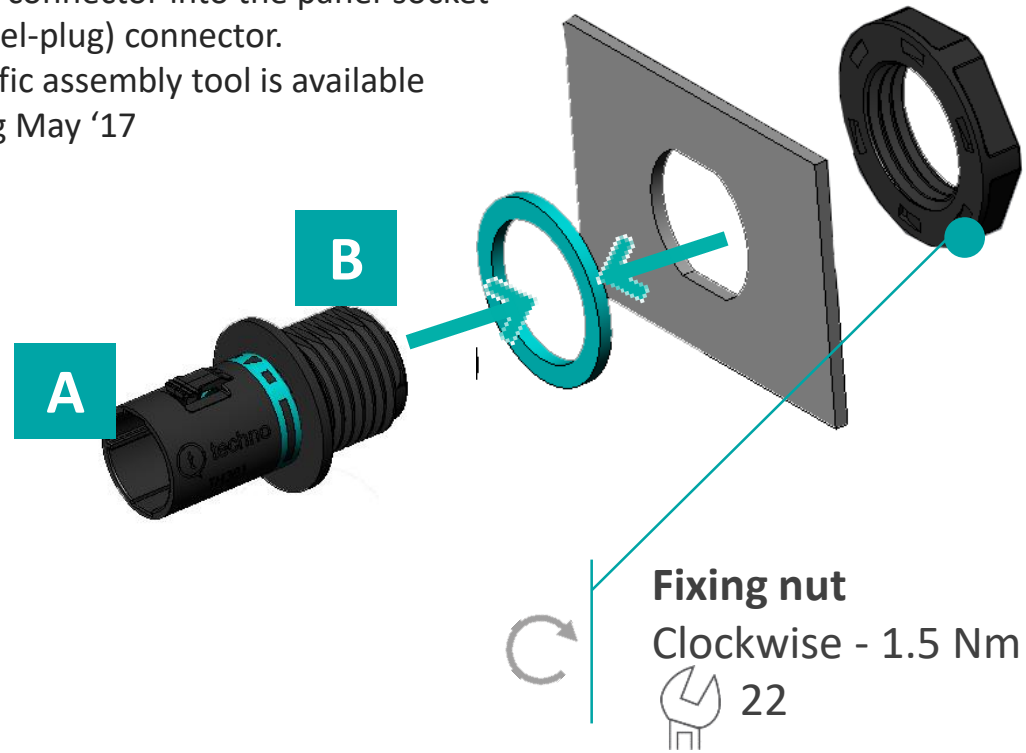
TH381 panel-mounted M20 (all panels)

Code: THx.381.Nxx
THx.381.Pxx



Important

In case of circular hole, in order to hold the panel-connector when panel-mounting, you should insert the plug (or socket) connector into the panel-socket (or panel-plug) connector.
A specific assembly tool is available starting May '17



Panel thickness:
1.0 mm ÷ 7.0 mm

How to use the quick-fix spanner



Bottom

Bottom

SAME AS THE RIGHT SIDE

Nut




Code: THx.381.xxx

How to use the quick-fix spanner (cont.)

example



1. Turn the nut (A) of the connector clockwise using the quick-fix spanner
2. Continue to turn it up to the nut will not turn more. You will hear a noise due to friction of the key on the nut 
3. At this point you have the nut tighten with a torque force of $2.0 \text{ Nm} \div 2.5 \text{ Nm}$
4. Important: the cable gland (B) will be tightened automatically when turning the nut (A)
5. Cable retention and IP68 resistance are guaranteed (acc. to EN61984 and EN60998/EN60529)